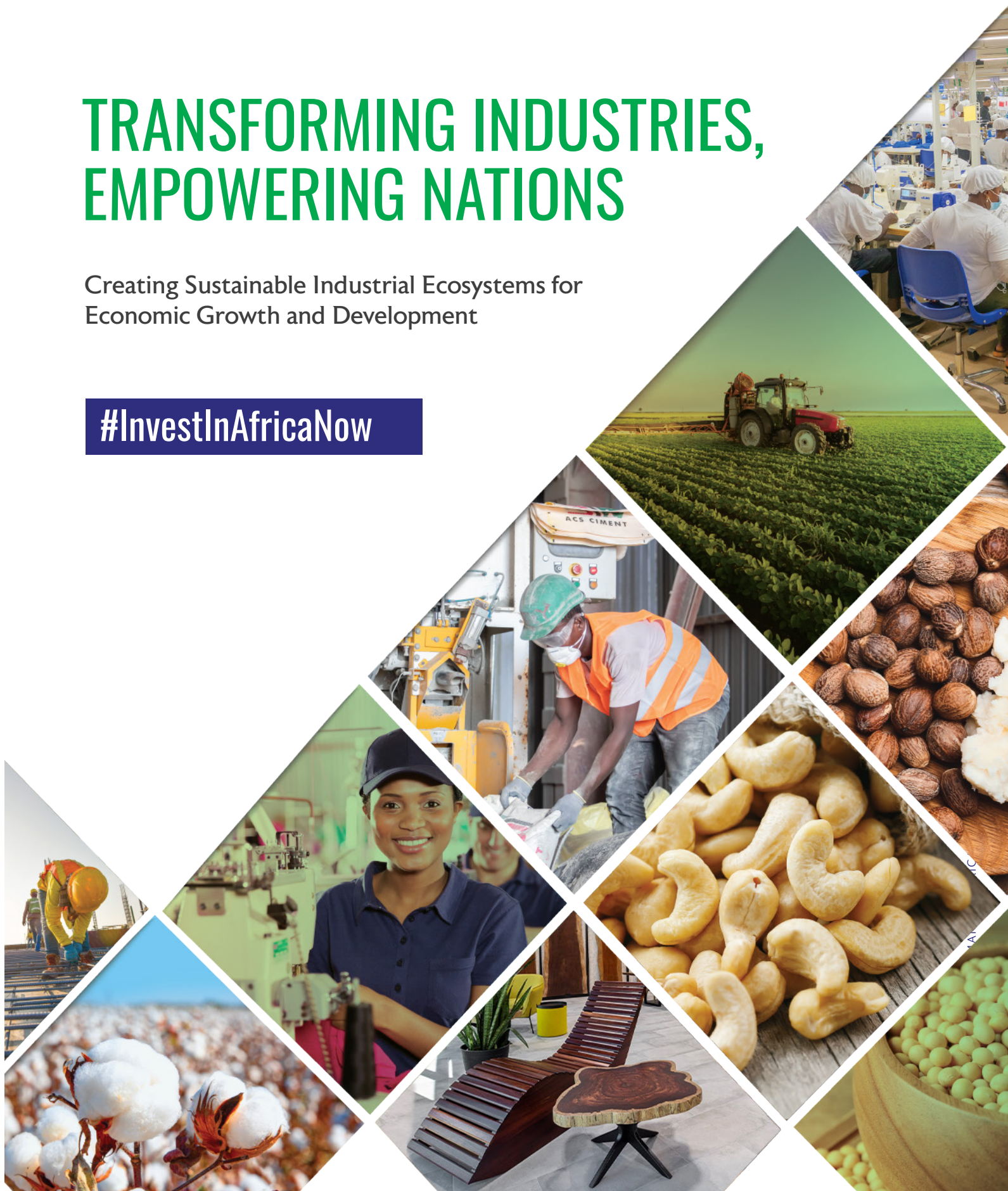




TRANSFORMING INDUSTRIES, EMPOWERING NATIONS

Creating Sustainable Industrial Ecosystems for
Economic Growth and Development

[#InvestInAfricaNow](#)



ARISE IIP

EMPOWERING AFRICAN INDUSTRIES

ARISE IIP is a leading infrastructure developer in Africa, specializing in conceiving, financing, building, and operating integrated and tailor-made industrial zones. We aim to bridge industrial gaps and unlock Africa's potential for sustainable local transformation, export growth, and trade promotion. By partnering with governments and aligning with their development strategies, we drive the emergence of industrial ecosystems and facilitate the shift from a commodity supplier to a global manufacturing powerhouse.

OUR VISION

- ✓ Building Stronger Economies, Empowering Communities
- ✓ Ensure Massive Job Creation
- ✓ Develop High Value-Added Industrial Activities for Local Economies

OUR MISSION

Creating +1 Million Direct Jobs Together

OUR SHAREHOLDERS



EQUITANE

OUR PRESENCE

5 OPERATIONAL INTEGRATED ECOSYSTEMS



Gabon Special Economic Zone
Gabon



Adetikopé's industrial platform
Adetikopé - Togo



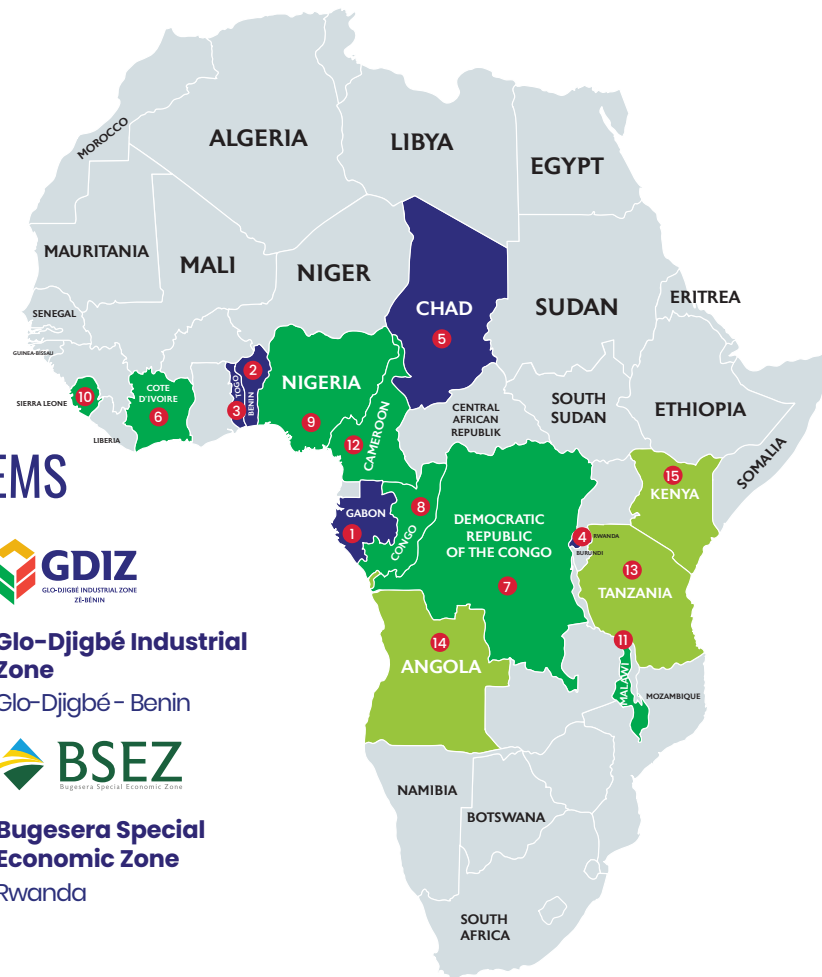
Laham
Chad



Glo-Djigbé Industrial Zone
Glo-Djigbé - Benin



Bugesera Special Economic Zone
Rwanda



7 INTEGRATED ECOSYSTEMS UNDER DEVELOPMENT



Ivory Coast's industrial platforms
Ivory Coast



Zone Economique Speciale de Kin-Malebo
Democratic Republic of the Congo



Congo's industrial platform
Republic of Congo-Brazzaville



Industrial Platform Remo Free Zone
Nigeria



Sierra Leone Industrial Zones
Sierra Leone



Magwero Industrial Park
Malawi



Dibamba Douala Industrial Platform
Cameroon

3 INTEGRATED ECOSYSTEMS UNDER DISCUSSION

13 Tanzania

14 Angola

15 Kenya

UNLOCKING OPPORTUNITIES FOR INVESTORS AND ENTERPRISES

INVESTMENT OFFERINGS

Plug & Play Industrial Facilities

Fully equipped turnkey industrial facilities, meeting top safety standards and prestigious ESG certifications.

Industrial Zone

Select from a range of ready-to-build plots (0.5 to 30 hectares) for diverse industries, offering strategic layouts and infrastructure to optimize your operations.

Residential Zone

Dedicated plots for apartment complexes, villas, and worker dormitories. Prioritize employee satisfaction and productivity while fostering a sense of community.

Truck Parking

Secure and convenient truck parking facilities ensure the smooth movement of goods in and out of our industrial zones. Experience uninterrupted logistics operations.

Commercial Zone

Carefully designated plots for a vibrant business community.

Warehouses

Efficient full-year storage solutions for raw materials and finished goods with our World Class warehousing. Streamline your supply chain and logistics, reducing costs and increasing profitability.

Container Yards

Our cost-efficient and hassle-free in-zone stuffing and de-stuffing services cater to your shipping needs.

ARISE IIP

WE HELP YOU SET UP YOUR BUSINESS IN OUR INDUSTRIAL PARKS



UNPARALLELED UTILITIES AND SERVICES



TAX INCENTIVES

Enjoy a host of tax benefits within ARISE industrial parks that include

- ✓ Exemption from Customs duties on the import of equipment and raw materials
- ✓ 0% Income Tax
- ✓ 0% Tax on Property
- ✓ 0% on Taxes on services
- ✓ 100% capital repatriation of profit or fund VAT exemption

TRANSFORMING THE TIMBER INDUSTRY, DRIVING SUSTAINABLE GROWTH



The Gabon Special Economic Zone (GSEZ) is a multi-sectoral industrial park of 1126 ha. Since its creation, GSEZ has attracted over 160+ investors from 15 countries across 17 sectors. It has played a vital role in Gabon's industrialization efforts, particularly in the timber industry. Gabon has emerged as the first exporter of veneer in Africa and the second in the world, thanks to the remarkable growth facilitated by the GSEZ.



GSEZ Nkok was named best wood-sector industrial zone in 2020 and earned honors for sustainability and investor appeal in 2022 and 2023.



First carbon-neutral certified industrial zone in Africa.

WOOD PROCESSING

- | | |
|--------------------|---------------------|
| ✓ Sawmill | ✓ Plastic Recycling |
| ✓ Veneer | ✓ Oil Recycling |
| ✓ Plywood | ✓ Metal recycling |
| ✓ Particle Board | ✓ Battery |
| ✓ Furniture | ✓ Beverages |
| ✓ Charcoal | ✓ Food Processing |
| ✓ Pellet | ✓ Paper Products |
| ✓ Resin & Chemical | ✓ Gas Bottling |
| ✓ Pharmaceutical | ✓ Telecom Equipment |
| ✓ Cement | |



Area
267,667 km²



Population
2 Million



GDP Growth Rate
1.5%



Capital
Libreville



TRANSFORMING AGRICULTURE, EMPOWERING LOCAL COMMUNITIES



Area
42,710 km²



Population
12 Million



GDP Growth Rate
7.2%



Capital
Port Novo



GDIZ, developed in partnership between the Republic of Benin and ARISE IIP, is a monumental undertaking spanning 1640 Ha in three phases, with Phase I already covering 400 Ha. Strategically located near Cotonou Port, GDIZ attracts over 40 industries engaged in a diverse range of processing and manufacturing activities. With a focus on agro-processing and food processing, GDIZ aims to revolutionize local agricultural product transformation in Benin. Phase I alone is projected to attract investments of at least \$1.4 billion, creating over 12,000 jobs and empowering local communities.

TARGETED SECTORS

- ✓ Cashew Processing
- ✓ Cotton Processing: Textile value chain
- ✓ Shea Processing
- ✓ Frozen Pineapple and Juice
- ✓ Soya Processing for Oil and Fodder
- ✓ Light Engineering
- ✓ Wood Products
- ✓ Phone & computer assembly
- ✓ Pharmaceutical
- ✓ Electric Vehicle assembly



DRIVING MANUFACTURING EXCELLENCE, ENHANCING LOGISTICS



PIA is a public-private partnership between the Republic of Togo and Arise Integrated Industrial Platforms (IIP). PIA Facilities have been planned with an area of 400 Hectare. Project site is strategically located on the National Highway – N1, connected to the south to Lome Port and to the north to landlocked countries Burkina Faso, Niger and Mali 27 Km from the Lome Port and 24 km from the Airport .

TARGETED SECTORS

- ✓ Soya into Soya oil, Soyabean Meals, Soya Milk
- ✓ 100% transformation of Teak wood
- ✓ Maize Milling & Corn Meal
- ✓ Cashew Processing
- ✓ Cotton Processing: Textile value chain
- ✓ Fertilizer & Chemical
- ✓ Artificial hair manufacturing
- ✓ Recycling Industries
- ✓ Pharmaceutical
- ✓ Automobile Assembly
- ✓ Packaging



Area
56,785 km²



Population
8 Million



GDP Growth Rate
5.3%



Capital
Lome





PROMOTING MANUFACTURING, FOSTERING TRADE AND INVESTMENT

BSEZ, located in the Bugesera District, Rwanda, aims to attract multi-sectoral industrial and commercial investments, facilitating the transformation of raw materials into high-value products. Positioned near the new international airport, BSEZ projects Rwanda as a regional hub for trade and investment. With targeted sectors such as timber processing, agro-processing, and packaging production, BSEZ holds the potential to create ample job opportunities and drive economic growth.

TARGETED SECTORS

- ✓ Timber processing
- ✓ Agro-processing
- ✓ Packaging production



Area
26,338 km²



Population
13 Million



GDP Growth Rate
7%



Capital
Kigali



DRIVING MEAT PROCESSING EXCELLENCE, FOSTERING ECONOMIC DEVELOPMENT



Laham Tchad, an industrial zone dedicated to meat processing in Chad, signifies a significant step toward self-reliance and local value creation. With a capacity of 20,000 MT, this project is poised to create numerous job opportunities and contribute to the country's economic growth. The partnership between ARISE IIP and the Chadian government aims to support the local economy and sustainable development through meat processing.

TARGETED SECTORS

- ✓ Meat Processing
- ✓ Poultry Processing
- ✓ Seafood Processing
- ✓ Feed manufacturing
- ✓ Rendering plants
- ✓ Meat Packaging
- ✓ Textile & Garmenting
- ✓ API1Pharma
- ✓ Electronics
- ✓ FMCG
- ✓ Waste Recycling
- ✓ Construction material
- ✓ Vaccine Manufacturing
- ✓ Leather goods
- ✓ Natron Processing


Area
1.284 million km²


Population
16 Million


GDP Growth Rate
2.49%


Capital
N'Djamena



DRIVING AGRO-PROCESSING, ENHANCING VALUE ADDITION



PEIA, a comprehensive industrial area, is a joint effort between the government of Côte d'Ivoire and ARISE IIP. Spanning 500 hectares, PEIA is dedicated to agro-processing, value addition, and import substitution. By supporting end-to-end business functions, PEIA aims to create thousands of jobs while reducing imports. The zone's strategic focus on agro-processing, construction materials & chemicals, and logistics & distribution positions Côte d'Ivoire as a regional hub for sustainable industrialization and economic growth.

TARGETED SECTORS

- ✓ Cashew Processing
- ✓ Cotton Processing: Textile value chain
- ✓ Rubber Processing
- ✓ Cassava Starch, Flour, Ethanol
- ✓ Shea seeds processing, butter etc
- ✓ Fruit Processing : Pineapple, Coconut, Mangoes, etc
- ✓ Pharmaceutical
- ✓ Light Engineering
- ✓ Farm Equipment
- ✓ Phone & computer assembly
- ✓ Logistics
- ✓ Construction Material



Area
322,462 km²



Population
29 Million



GDP Growth Rate
7%



Capital
Yamoussoukro



UNLOCKING INDUSTRIAL POTENTIAL, CATALYZING ECONOMIC GROWTH



ZESKM, a significant public-private partnership with the Congolese government, is set to transform the industrial landscape of the Democratic Republic of Congo. With an initial phase covering 514 hectares, ZESKM aims to create nearly 20,000 jobs while attracting substantial multi-sectoral investments. ZESKM's strategic focus on pharmaceutical production, metal waste recycling, and beverage production positions the Kin-Malebo industrial zone near Kinshasa as a hub of industrial activity and economic growth.

WOOD PROCESSING

- ✓ Sawn Wood
- ✓ Vanner
- ✓ Plywood / MDF
- ✓ Furniture
- ✓ Glue
- ✓ Pharmaceutical
- ✓ Ceramic Tiles
- ✓ FMCG
- ✓ Recycling
- ✓ Agro processing



Area
2.345 Million km²



Population
100 Million



GDP Growth Rate
6.2%



Capital
Kinshasa



ACCELERATING INDUSTRIALIZATION, FOSTERING SUSTAINABLE PRACTICES



PIC POINTE-NOIRE

- Location:**
Pointe-Noire, Republic of Congo
- Zone size:**
Phase 1 = 500 Ha;
Total Project Area = 2700 Ha

PIC OYO

- Location:**
Oyo, Republic of Congo
- Zone size:**
132.8 Ha

PICP comprises Plateformes Industrielles du Congo – Pointe-Noire (PICP) and Plateformes Industrielles du Congo – Oyo (PICO). Developed in partnership with the government, these industrial zones aim to accelerate industrialization, create over 5,000 jobs, and promote sustainable practices. PICP, covering an area of 500 Ha, is already under construction and will be developed in two phases. This strategic partnership is aimed at creating a local ecosystem and supporting manufacturing

TARGETED SECTORS

- | | | |
|-----------------------|-------------------------|----------------------------|
| ✓ Sawn Wood | ✓ Raw & Insulated wires | ✓ Steel Products |
| ✓ Venner | ✓ Pipes & tubes | ✓ Plastic Products |
| ✓ Plywood / MDF | ✓ Alloy sheet | ✓ Meta Refining/ Recycling |
| ✓ Wood Pannel | ✓ Copper Cathodes | ✓ Fertilizers |
| ✓ Paper / Paper Board | ✓ Glass Manufacturing | ✓ Pharmaceutical |
| ✓ Packaging | ✓ Ceramic Products | ✓ Agro processing |
| ✓ Methanol & Glue | ✓ Consumer Goods | ✓ White Goods Assembly |



Area
342,000 km²



Population
5.5 Million



GDP Growth Rate
2.3%



Capital
Brazzaville



IGNITING INDUSTRIAL INNOVATION, ACCELERATING NIGERIA'S GROWTH



IPR, a public-private partnership with the State of Ogun, covers an extensive area of 5,700 hectares. This industrial platform focuses on localized value development, advanced technology integration, and the promotion of sustainable and inclusive growth. With its comprehensive approach, IPR includes a Special Agro-Processing Zone, Distribution & Logistics Hub, and Residential Estates. By leveraging advanced technologies and fostering a supportive ecosystem, IPR aims to revolutionize industrial innovation in Nigeria and drive the country's industrialization efforts.

TARGETED SECTORS

- | | |
|---|-------------------------|
| ✓ Cassava (Starch, Flour, Sorbitol) | ✓ Electronics |
| ✓ Groundnut (Oil, Peanut Butter, Flour, Cake) | ✓ White goods |
| ✓ Ginger (Ginger & its application, Powder) | ✓ Waste Recycling |
| ✓ Cashew (Processing, Juice, Milk, Butter, CNSL) | ✓ Construction material |
| ✓ Palm (Oil, Cattle Feed) | |
| ✓ Soyabean (Seed Processing, Cattle Feed, Tofu, milk) | |
| ✓ Tomato (Processing, Puree, paste) | |
| ✓ Sesame (Seed processing, Cake, Oil) | |
| ✓ Rubber (Products, Paint, Synthetic) | |
| ✓ Farm Equipment | |
| ✓ API Pharma | |



Area
923,770 km²



Population
218 Million



GDP Growth Rate
2.31%



Capital
Abuja



MAGWERO INDUSTRIAL PARK, PIONEERING INDUSTRIAL GROWTH IN MALAWI



The Magwero Industrial Park (MIP) aims to create strategic partnerships for developing industrial ecosystems that produce value-added products. As the first Special Economic Zone in partnership with the Government of Malawi, MIP will focus on value addition and industrialization, enhancing the country's economy and providing new business opportunities.

TARGETED SECTORS

Agriculture

- ✓ Soyabean
- ✓ Maize
- ✓ Tomato
- ✓ Groundnut
- ✓ Starch-Based
- ✓ Industries
- ✓ Cattle & Poultry Feed

Other Industries

- ✓ Construction Material
- ✓ Rolling Mills
- ✓ Plywood & Paper
- ✓ Glass Manufacturing
- ✓ LED Lighting & Fittings



Area
11.84 million km²



Population
20.40 Million



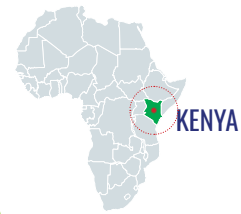
GDP Growth Rate
646 USD



Capital
Lilongwe



CATALYZING INDUSTRIALIZATION IN KENYA



Vipingo Special Economic Zone (VSEZ) is a 2,000-acre plug-and-play industrial park developed through a collaboration between ARISE IIP and Centum Investment Company. Designed as a sustainable business hub with world-class infrastructure, VSEZ prioritizes green energy solutions, making it ideal for energy-intensive operations and a diverse range of industries seeking growth in East Africa. As part of a larger 10,000-acre development, it offers a unique and strategic environment for businesses to thrive in today's competitive global market. VSEZ provides all essential facilities, ensuring seamless operations for investors and enterprises.

TARGETED SECTORS

- | | |
|----------------|--------------------------|
| ✓ Soybean | ✓ Coffee |
| ✓ Macadamia | ✓ Plywood |
| ✓ Maize | ✓ Sawn wood |
| ✓ Tomato | ✓ Veneer |
| ✓ Groundnut | ✓ Particle board |
| ✓ Cassava | ✓ Animal feed |
| ✓ Sweet potato | ✓ Pharmaceuticals |
| ✓ Sorghum | ✓ Soaps |
| ✓ Cotton | ✓ Construction materials |
| ✓ Avacado | |
| ✓ Tea | |



Area
610,000 km²



Population
54 Million



GDP Growth Rate
5.6%



Capital
Nairobi



AFRICA

IS INVITING INVESTORS

Visit Now

www.AfricaForInvestors.com



Discover the various business opportunities
that Africa has to offer.

AGRO & FOOD PROCESSING | TEXTILE | PHARMACEUTICALS
| METALS & MINERALS | RECYCLING AND MORE



AFI
AFRICA FOR INVESTORS

ARISE
INTEGRATED INDUSTRIAL
PLATFORMS

COMMITTED TO MAKING AFRICA THRIVE



OUR CLIENTS

14

INDUSTRIAL PARKS
IN AFRICA

3500+ HA

LAND AREA OPERATIONAL
& UNDER CONSTRUCTION

50+

INDUSTRY SECTORS

FROM 25+

COUNTRIES

250+

COMPANIES



SRI LANKA



GHANA



LEBANON



DUBAI



CHINA



UAE



ANGOLA



HONGKONG



UAE



CHINA



CHINA



TOGO



INDIA



BENIN



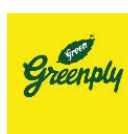
DUBAI



UK



DUBAI



INDIA



FRANCE



BENIN



SINGAPORE



FRANCE



BENIN



PORTUGAL



CHINA



INDIA



ITALY



SENEGAL





SUSTAINABILITY

MINIMIZING ENVIRONMENTAL IMPACT, EMPOWERING COMMUNITIES

At ARISE IIP, we prioritize sustainable development and strive to align our environmental, health and safety, and social and governance practices with international standards. Our sustainable manufacturing practices have resulted in a significant reduction in carbon emissions compared to similar industries in Asia. We are committed to minimizing risks to the environment and local communities and providing a healthy and safe workplace for our workforce.

SUSTAINABILITY HIGHLIGHTS:

1,507,070

beneficiaries of ARISE
ASSISTANCE

168%

reduction in carbon footprint
in wood, t-shirt, and cashew
processing industries

Carbon Impact

Assessment completed
for 4 wood industries in
NKOK SEZ

4

industries on their Carbon
Neutral Journey, targeting
Carbon Neutral in 2023

Expected generation
of approximately

286,000 carbon
credits from 6 projects in
GSEZ in 2023

ARISE IIP is dedicated to creating sustainable industrial ecosystems, empowering nations, and driving Africa's transformation. Join us in shaping the future of African industries and unlocking the continent's true potential.



To invest, partner, or inquire, please reach out to our representatives in the respective regions

India

Vijay Shekhawat
vijay.shekhawat@arisenet.com

Divyashree Hegde
divyashree.hegde@arisenet.com

Manish Maharaj
manish.maharaj@arisenet.com

Amit Kaushik
amit.kaushik@arisenet.com

A K Pramod Kumar Kothamasu
akpramod.k@arisenet.com

Umang Modi
umang.modi@arisenet.com

China

Mellon Fang
mellon.fang@arisenet.com

Janet Luo
janet.luo@arisenet.com

Jacky Zhou
jiaqi.zhou@arisenet.com

Cherrie Dai
lanlan.dai@arisenet.com

Tingting Huang (Becky)
becky.huang@arisenet.com

Qing Xia (Summer)
summer.xia@arisenet.com

Tiantian Dai (Gina Dai)
gina.dai@arisenet.com

Lihua ZHOU (Alissa)
alissa.zhou@arisenet.com

Vietnam

Thi Tuong Vi Nguyen
vi.nguyen@arisenet.com

Africa

Nivedh Shetty
nivedh.shetty@arisenet.com

Yingjuan Nie (Beatrice)
yingjuan.nie@arisenet.com

UAE

Venkat Pisipaty
venkat.pisipaty@arisenet.com

Shreya Jain
shreya.jain@arisenet.com

To explore various opporutines in Africa. Visit www.africaforinvestors.com

Call/WhatsApp: +91 7065100700 | Email: invest@arisenet.com

Arise Integrated Industrial Platforms
Together, we are committed to making Africa thrive